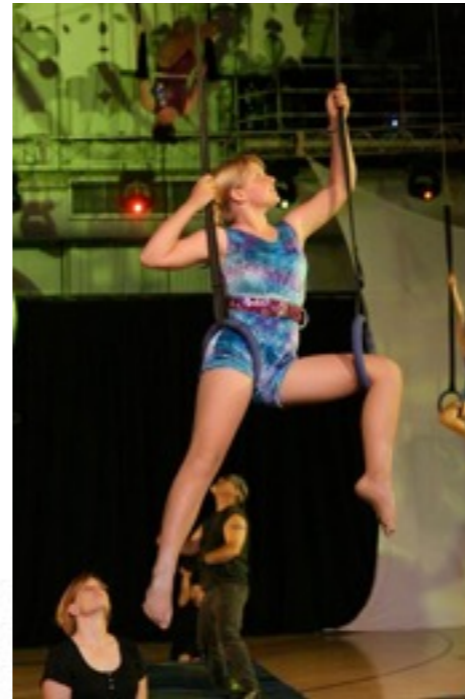
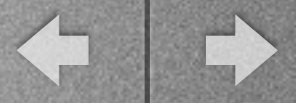




Larger Acts 20+

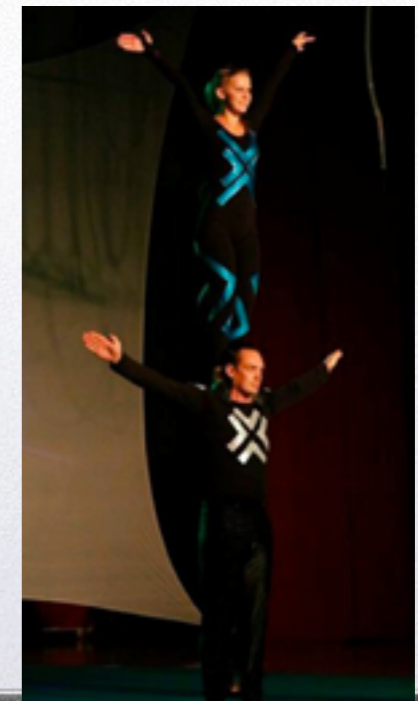
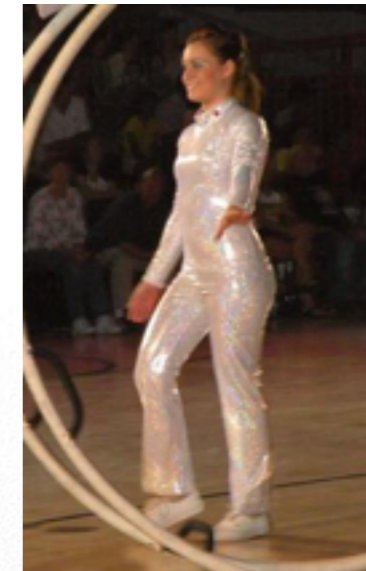
- Blue sparkling biketards (child sizes 8 through small adult) w/ 2 matching child size pants
- 'Cat' costumes (child & adult size) - variety of colors
- 32 Black leotards & biketards w/geometric slashes & designs (variety of sizes)
- Neon color leotards w/swirl (male & female - variety of sizes, both child & adult)
- 36 metallic silver mini skirts match with this costume; also 3 pair of silver metallic male adult size pants and 3 pair child size





Larger Acts 20+

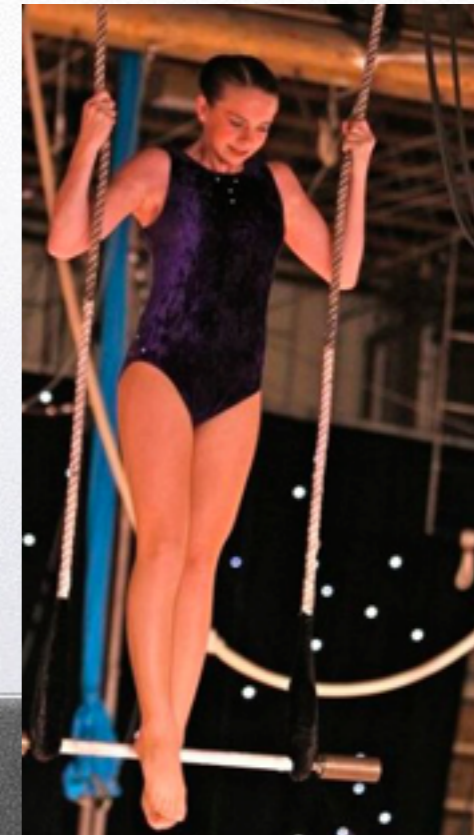
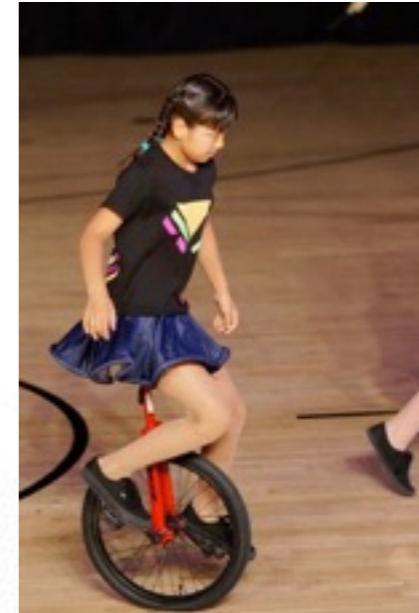
- Bullseye leotards (mostly child sizes with a few adult) plus Bullseye unitards (not too many - mostly adult sizes)
- White silver pants (child & adult sizes)
- Flower leotards (child & adult sizes)
- Black crushed velvet leotards w/gold yoke (adult & child sizes)
- 'Tron' long sleeve black leotard w/applique - most are adult sizes with a few child sizes





Larger Acts 20+

- 27 Orange leotards with stripe applique & ribbons (both child size and small adult sizes)
- 30 denim lycra skirts w/corded hem - child & adult sizes
- Glitter tops (male w/sleeve, female sleeveless) various sizes adult & child, various colors - added sheer dark blue shirts in 2014
- 40 Crushed velvet purple leotards with stones center top and stones on side by leg (mostly child sizes with a few adult sizes)

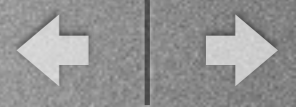




Larger Acts 20+

- Dora the Explorer costumes
- Multi color t-shirts appliqued with sequin stripes
 - There are numerous multi-color tees without applique in various sizes. There is an entire bin of plain black tees in a variety of sizes.
- 50 squid hats / 35 fish hats





Larger Acts 20+

- One bin of adult/child nylon black jazz pants
- One bin of cotton lycra jazz pants with V waist (Chinese Pole has priority as these were bought to accommodate the pole equipment)
- One bag with a variety of different color bootie shorts, 5 pair bronze adult pants, 5 pair midnight blue adult pants, 1 turquoise child pant, 1 red small adult pant, 4 purple adult pants, 1 yellow child pant, 3 turquoise swirl child pants
- One bag of black sheer circle skirts
- One bag of fleece black shorts
- One bag of cotton lycra black short

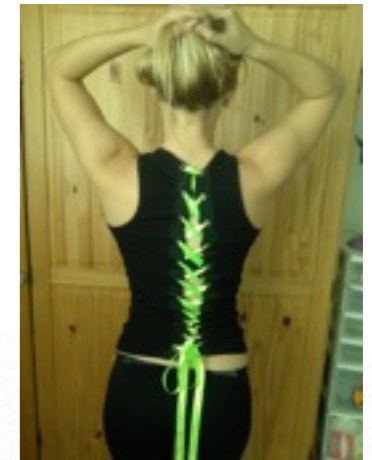
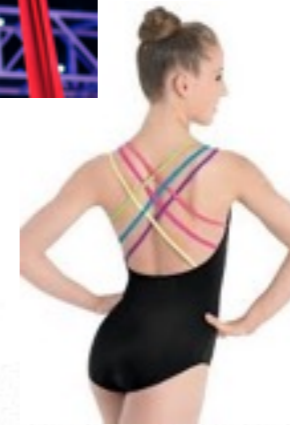




Larger Acts

20+

- 24 Rainbow bandage back leotards - both adult and child sizes - and 23 rainbow multi-strap leotards - both adult and child sizes.
 - 10 matching criss cross bandage back tank tops - all adult size - not appropriate for aerial acts that wrap or rub on bar.
- 23 Purple Asymmetrical tye-dye leotards with straps (various sizes - Jr Child to XLg Adult)
- 24 gun metal gray racer back leotards w/ sequin appliqué (various sizes - Intermed Child to Large Adult)

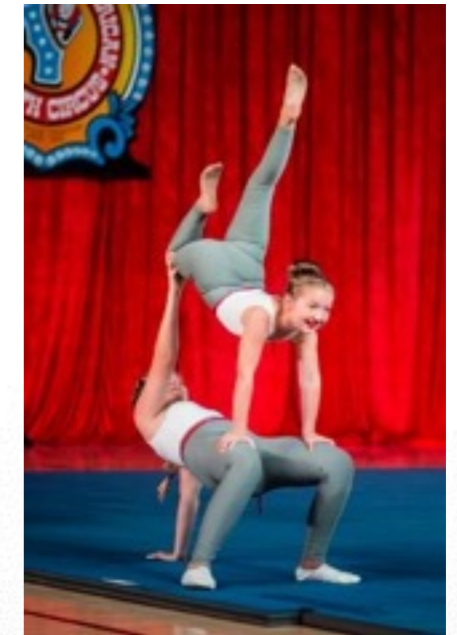


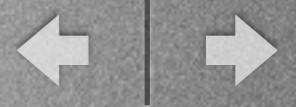


Larger Acts

20+

- 22 multi blue ribbon capes (possibly could be used for skirts)
- 35 gray high waisted leggings (children & adult sizes)
- 35 black/white striped non-stretch shirts (children and adult sizes)
- 24 white sparkle camisole leotards. (children & adult sizes). These leotards are made from 100% nylon (no lycra)





Larger Acts

20+

- 25 Camisole silver sequin leotards and 20 silver sequin mesh halter leotards, both adult and child sizes. These can be used together for larger acts.
- Dark red velvet leotards (mix of keyhole & regular tank leos) with 3 rhinestones—Sizes are:

Child

6/7 - 10

8/10 - 11

10/12 - 3

12/14 - 11

Adult

Petite - 1

Small - 6

Medium - 1

Large - 3

XLarge - 1

- 29 blue shiny lycra front/dark lavender back tank leotards, back has lavender ruffle skirt. Front has silver and pink sequin on the diagonal. Majority are child sizes with a few adult sizes.





Larger Acts

20+

- 29 purple velvet tank leotards with a silver yoke and 6 matching male biketards (2 adult, 4 child)

Child

5/6 - 2

6/7 - 4

8/10 - 6

12/14 - 6

Adult

Petite - 2

Small - 4

Medium - 4

XXLarge - 1

- 12 purple velvet leotard with blue/purple foil print yoke and criss cross back. This outfits blends in well with leotards above.

- 25 fluorescent black tee shirts with geometric design

Youth

Small - 2

Medium - 5

Large - 6

XLarge - 2

Adult

Small - 7

Medium - 1

Large - 1

XXLarge - 1





Larger Acts

20+

- Dark green velvet biketard with green, gold glitter dot, orange and purple appliqués. Typically used by multilane cradle so there are more of the larger sizes to accommodate cradle bases

Child

8/10 - 4

12/14 - 3

14/16 - 1

Adult

Small - 2

Medium - 2

Large - 3

XLarge - 8

- 18 'Cyborg' silver unitards and 10 plain silver unitards with sleeves. The Cyborg unitards are all adult sizes. The 10 plain silver have a few child sizes among them.





Larger Acts

20+

- Stretch velvet unitard, zebra print girls and black with zebra insert mens. Some have rhinestones added. Six (6) of female unitards below were altered in 2008 - one leg shorter than other leg

Male: child 12/14 - 2
adult Large - 1
XLarge - 1
XXLarge - 1 long

Female: child 6x - 1
8 - 1
10 - 2
12 - 3
14 - 1
adult Xsmall - 1
Small - 8
Medium - 2

